

≡ Certified Pre-Owned ≡  
by BMW

Certified Pre-Owned  
BMW Vehicles

[bmwusa.com/cpo](http://bmwusa.com/cpo)



The Ultimate  
Driving Machine®

# A HERITAGE OF PERFORMANCE AND ENVIRONMENTAL LEADERSHIP

For over 75 years, the name Bavarian Motor Works – BMW – has been synonymous with high performance and driving pleasure. Now as then, every vehicle that bears the famous blue-and-white Roundel is designed and engineered to deliver the promise of The Ultimate Driving Machine.®

## **Unequaled driving appeal**

From classically contemporary exterior design, to luxurious interior appointments and materials, no other vehicle looks or feels like a BMW. But to fully understand the appeal of a BMW, all you need to do is drive one. The experience begins when you buckle up, start the engine, put it into gear and take your first corner. The vehicle responds – almost intuitively – to your input. The controls communicate with your senses. In fact, BMW drivers quickly come to prefer the long and twisty road, making every ride an exhilaration.

The BMW you have always dreamed of is here...again. The Certified Pre-Owned BMW program presents an excellent opportunity for you to get behind the wheel and experience that special BMW today.





### 1990 – 2005

BMW reduced emissions of its U.S. fleet by 12.3%, more than any other car brand.



### 2000

The birth of BMW EfficientDynamics – the art of creating less emissions with more driving pleasure.



### 2001

BMW introduces its revolutionary Valvetronic technology, making BMW engines more efficient.



### 2005 – 2009

BMW named “The world’s most sustainable automotive manufacturer.” Not once, but five years in a row.



### 2006

State-of-the-art Spartanburg, SC, production plant is named “Energy Partner of the Year 2006.”



### 2007

The premiere of the BMW Hydrogen 7 Series, the world’s first hydrogen performance sedan.



### 2008

BMW 118d awarded “2008 World Green Car of the Year.”



### 2008

Introduction of BMW Advanced Diesel – 35% better MPG, 20% less CO<sub>2</sub>. It’s diesel like never before.



### 2009

Kelley Blue Book’s kbb.com names BMW 335d a “2009 Top 10 Green Vehicle.” Diesel by BMW is a beautiful thing.



### 2010

BMW reinvents the hybrid with ActiveHybrid, extending its alternative fuel lineup. The future looks greener than ever.





## THE CERTIFIED PRE-OWNED BMW PROGRAM

### The assurance of BMW certification

Not every BMW becomes a Certified Pre-Owned BMW. The certification process is comprehensive, the criteria are rigorous and the procedures are meticulously performed. Which is exactly what you would expect from BMW.

When you examine a Certified Pre-Owned BMW, you can appreciate these facts:

- It's a recent BMW model with less than 60,000 miles
- It has been thoroughly inspected by a BMW trained Technician
- It's accompanied by a complete CARFAX® Vehicle History Report™
- It's covered by the Certified Pre-Owned BMW Protection Plan for up to 6 years or 100,000 miles from the original in-service date\*
- It has \$0 Maintenance for the first 4 years or 50,000 miles (whichever comes first)
- It's backed by a nationwide network of BMW centers
- It's covered by BMW Roadside Assistance

### Designed to be certified from the start

Every Certified Pre-Owned BMW starts out, of course, as a new BMW, with all the performance, safety engineering and innovative technology that are integral to the BMW brand. In fact, many technological advancements, from anti-lock brakes to Dynamic Stability Control (DSC), were standard equipment on BMW vehicles, years before they were widely adopted by the rest of the industry.

What's more, since new BMW vehicles come with no-cost maintenance and timely service reminders under the BMW Ultimate Service™ program, you can be confident that your Certified Pre-Owned BMW was well maintained by the previous owner.

\* The Certified Pre-Owned BMW Limited Warranty provides coverage for up to 2 years or 50,000 miles (whichever comes first) from the date of the expiration of the 4 year/50,000 mile (whichever comes first) BMW New Vehicle Limited Warranty. See your BMW center or visit [bmwusa.com/cpo](http://bmwusa.com/cpo) for complete details of warranty coverage.



### **Inspected history**

Every Certified Pre-Owned BMW comes with a CARFAX® Vehicle History Report™ so you know the vehicle's maintenance history at the time of certification. Talk about peace of mind – you'll be reassured by a CARFAX® Report, and you'll be confident knowing it is certified by BMW. Ask your BMW Client Advisor for all the details.



### **A wealth of choices**

Selecting which Certified Pre-Owned BMW vehicle is the one for you may be the easiest – or perhaps the most difficult – part. Choose from Sedans, Coupes, Convertibles, Sport Wagons, Sports Activity Vehicles and Roadsters. Automatic, manual or even racing-style SMG transmissions. And of course, there's a wide spectrum of colors, interior trim, options and accessories.

Search online at [bmwusa.com/cpo](http://bmwusa.com/cpo) or contact your local BMW center. Whether you choose a nimble and sporty Z4 Roadster or a sophisticated 7 Series luxury sedan, you'll be driving a BMW – with an extremely rewarding experience awaiting you every day.

### **Comprehensive processes**

Every BMW vehicle considered for certification must undergo a comprehensive inspection process by a BMW trained Technician. Systems and components are checked, ranging from engine performance, to the operation of the glovebox. Particular attention, of course, is devoted to safety-related items, from tire tread depth, to seatbelt function, to the operation of the brake lights. Everything must perform according to BMW specifications. In addition, all scheduled maintenance is brought up to date.

Next, the vehicle is road-tested to ensure that its driving performance is everything a BMW owner would expect. If something is not right, it is corrected. If it cannot be corrected, the car cannot become a Certified Pre-Owned BMW.

# A PROTECTION PLAN DESIGNED FOR YOU

The Certified Pre-Owned BMW Protection Plan has been designed to give you peace of mind, so you can enjoy every moment behind the wheel of your BMW.

- Coverage for up to 6 years or 100,000 miles**

When you acquire a Certified Pre-Owned (CPO) BMW, your vehicle will be covered by a 2 year/50,000 mile CPO BMW Limited Warranty that takes over when the original 4 year/50,000 mile New Vehicle Limited Warranty expires.\*

The CPO Limited Warranty covers a wide range of vehicle components, including the engine, powertrain, electrical system, climate control and more.\* The BMW Protection Plan is administered by BMW of North America, which ensures that covered repairs will be performed by BMW trained Technicians using only original BMW parts.

## BMW covers the vehicle for up to 6 years or 100,000 miles (whichever comes first)\*

<p><b>BMW New Vehicle Limited Warranty</b></p> <ul style="list-style-type: none"> <li>■ <b>New Vehicle Warranty: 4 years/50,000 miles (whichever comes first)</b></li> <li>■ <b>New Vehicle BMW Roadside Assistance: 4 years with unlimited miles</b></li> </ul>	<p><b>Certified Pre-Owned BMW Protection Plan</b></p> <ul style="list-style-type: none"> <li>■ <b>Certified Pre-Owned Warranty: 2 years/50,000 miles (whichever comes first)</b></li> <li>■ <b>Certified Pre-Owned BMW Roadside Assistance: 2 years with unlimited miles**</b></li> </ul>
--	---

■ Original In-Service Date

.....▶

■ Expiration of BMW New Vehicle Limited Warranty

.....▶



**Official credentials**  
 Only after being officially selected, inspected and prepared can a pre-owned BMW receive its credentials – the Statement of Certification that it is a Certified Pre-Owned BMW.

\* The Certified Pre-Owned BMW Limited Warranty provides coverage for up to 2 years or 50,000 miles (whichever comes first) from the date of the expiration of the 4 year/50,000 mile (whichever comes first) BMW New Vehicle Limited Warranty. The BMW Certified Pre-Owned Protection Plan is valid only in the United States and Puerto Rico. The coverage is not valid in Canada. The limited warranty coverage is transferable. See your BMW center for complete details.  
 \*\* Starting with the expiration of the 4 year New Vehicle BMW Roadside Assistance plan. Subject to certain limitations and exclusions.



- **24/7 travel protection at no additional cost**

Every Certified Pre-Owned BMW also comes with BMW Roadside Assistance coverage for 2 years with unlimited miles.\* It doesn't matter where you are in the 50 states, Canada or Puerto Rico, or what time of day or what day of the year it is – BMW Roadside Assistance is just a toll-free call away.

\* Starting with the expiration of the 4 year New Vehicle BMW Roadside Assistance plan. Subject to certain limitations and exclusions.

- **BMW Assist for convenience, confidence and more**

BMW Assist can add confidence and convenience to your travels. This service, which is available on many late-model BMW vehicles, combines GPS location technology with hands-free wireless communications. You get automatic collision notification, and with a push of a button, emergency assistance, or even directions, traffic and weather information. The service also includes accidental lockout assistance. Ask your BMW Client Advisor for vehicles covered and subscription details.



# 1

## BMW 1 SERIES – COMPACT, EXPRESSIVE AND THRILLING

The 1 Series may be the most direct expression of BMW driving joy yet. With a choice of six-cylinder engines, six-speed manual or six-speed Steptronic automatic transmissions, plus perfectly balanced 50/50 weight distribution, the 1 Series presents a winning personality with a flare for fun.

### Thrilling dynamic performance

- Award-winning, responsive and efficient DOHC 24-valve inline six-cylinder engines. Six-speed manual or Steptronic automatic transmission\*
- Advanced dynamic safety and performance systems include four-wheel anti-lock disc brakes, Dynamic Stability Control, Dynamic Traction Control, brake-fade compensation, brake standby and brake drying\*

### Surprising amenities

- Available comfort and convenience features include leather seating surfaces and wood trim, premium Harman Kardon audio, dual-zone automatic climate control, Xenon adaptive headlights, iPod/USB adapter and navigation\*

### 1 Series safety engineering

- Comprehensive safety systems range from front, side-impact and side-curtain airbags (SRS)\*\* to pre-tensioning front safety belts, to run-flat tires with Tire Pressure Monitor

### A choice of body styles

- Available as a two-door Coupe or Convertible

\* The availability of specific models, drivetrains, features and options may vary by region, and the precise combination of features you are looking for may not be available in a Certified Pre-Owned BMW.

\*\* Please remember that the safety belts in a BMW constitute the primary protection system for driver and passengers in collisions. The airbag Supplemental Restraint System (SRS) is a supplement to the safety belts. Although airbags provide additional protection, airbags alone are not sufficient. Always wear your safety belts. Children younger than 12 years old should always be properly restrained in a back seat, away from airbags. Never place an infant seat in the front seat.







## BMW 3 SERIES – THE BENCHMARK OF ITS CLASS

The perennial winner of road-test comparisons and “best-buy” recommendations, the 3 Series is in many ways the definitive BMW. With legendary performance and countless appealing features, it is the class-leading sports Sedan...Coupe, Convertible and Sports Wagon.

### Leading dynamic performance

- Award-winning, responsive and efficient DOHC 24-valve inline six-cylinder engines. Six-speed manual or Steptronic automatic transmission\*
- Advanced dynamic safety and performance systems include four-wheel anti-lock disc brakes, enhanced Dynamic Stability Control, Dynamic Traction Control, brake-fade compensation, brake standby and brake drying\*

### More than the expected amenities

- Available comfort and convenience features include leather seating surfaces and wood trim, premium Harman Kardon audio, automatic climate control, rain-sensing windshield wipers, Xenon adaptive headlights, iPod/USB adapter and navigation\*



### 3 Series safety engineering

- Comprehensive safety systems range from front, side-impact and side-curtain airbags (SRS)\*\* to pre-tensioning front safety belts, Coded Drive-Away Protection, and run-flat tires with Tire Pressure Monitor

### A wide range of models

- Available as a Sedan, Coupe, Convertible or Sports Wagon
- The all-weather traction of xDrive intelligent all-wheel drive is available on select models\*

\* The availability of specific models, drivetrains, features and options may vary by region, and the precise combination of features you are looking for may not be available in a Certified Pre-Owned BMW.

\*\* Please remember that the safety belts in a BMW constitute the primary protection system for driver and passengers in collisions. The airbag Supplemental Restraint System (SRS) is a supplement to the safety belts. Although airbags provide additional protection, airbags alone are not sufficient. Always wear your safety belts. Children younger than 12 years old should always be properly restrained in a back seat, away from airbags. Never place an infant seat in the front seat.

# 5

## BMW 5 SERIES – THE INNOVATIVE LUXURY SPORTS SEDAN

Every 5 Series model presents a high level of luxury and refinement, but it is also very much a driver's car. Its handsome and contemporary European design has a definite sporting edge and innovative technologies. Accommodating interior and luggage capacity only add to the appeal of the 5 Series.

### Performance refined to an art form

- Responsive and efficient DOHC 24-valve inline six-cylinder engines or DOHC 32-valve V8. Six-speed Steptronic automatic or available manual transmission\*
- Advanced dynamic safety and performance systems include four-wheel anti-lock disc brakes, enhanced Dynamic Stability Control, Dynamic Traction Control, brake-fade compensation, brake standby and brake drying.\* Available active steering\*

### Luxurious amenities

- A wide range of luxury features is available, including leather seating surfaces and wood trim, LOGIC7 surround-sound audio, Cold Weather Package, rain-sensing windshield wipers, head-up display, iPod/USB adapter and navigation\*

### 5 Series safety engineering

- Comprehensive safety systems range from front, side-impact and side-curtain airbags (SRS),\*\* to pre-tensioning front safety belts, to Coded Drive-Away Protection, to run-flat tires with Tire Pressure Monitor

### Available as a Sedan or Sports Wagon

- The all-weather traction of xDrive intelligent all-wheel drive is available on select models\*

\* The availability of specific models, drivetrains, features and options may vary by region, and the precise combination of features you are looking for may not be available in a Certified Pre-Owned BMW.

\*\* Please remember that the safety belts in a BMW constitute the primary protection system for driver and passengers in collisions. The airbag Supplemental Restraint System (SRS) is a supplement to the safety belts. Although airbags provide additional protection, airbags alone are not sufficient. Always wear your safety belts. Children younger than 12 years old should always be properly restrained in a back seat, away from airbags. Never place an infant seat in the front seat.







# Z4

## BMW Z4 – THE ANSWER TO THE CALL OF THE OPEN ROAD

**An ultra-modern sports car in the European tradition, the Z4 delivers the sheer fun of a long-hood, low-slung two-seater. With precise and communicative handling, yet refined comfort and convenience, the Z4 is most definitely the BMW of sports cars.**

### Uniquely satisfying performance

- Responsive and efficient DOHC 24-valve inline six-cylinder engines. Manual or Steptronic automatic transmission\*
- Advanced dynamic safety and performance systems include four-wheel anti-lock disc brakes, enhanced Dynamic Stability Control, Dynamic Traction Control, brake-fade compensation, brake standby and brake drying\*

### A wide range of amenities

- Available comfort and convenience features include leather seat trim, premium audio, heated seats, Xenon headlights, rain-sensing windshield wipers and navigation\*

### Z4 safety engineering

- Comprehensive safety systems range from front, side-impact and side-curtain airbags (SRS),\*\* to pre-tensioning front safety belts and Coded Drive-Away Protection

### Available as a Convertible or Coupe

- The ultimate choice: Open-air Roadster or sporty, dynamic Coupe

\* The availability of specific models, drivetrains, features and options may vary by region, and the precise combination of features you are looking for may not be available in a Certified Pre-Owned BMW.

\*\* Please remember that the safety belts in a BMW constitute the primary protection system for driver and passengers in collisions. The airbag Supplemental Restraint System (SRS) is a supplement to the safety belts. Although airbags provide additional protection, airbags alone are not sufficient. Always wear your safety belts. Children younger than 12 years old should always be properly restrained in a back seat, away from airbags. Never place an infant seat in the front seat.



# 6

## BMW 6 SERIES – STYLE, EXCLUSIVITY AND FINELY HONED REFLEXES

Beneath the sleek and elegantly designed 6 Series sheetmetal lies the heart of a double-overhead camshaft V8. Alluring, athletic and exclusive, the 6 Series offers elegant seating for four, and a very rewarding experience for the one behind the wheel.

### A deep reserve of performance

- Responsive and efficient DOHC 32-valve V8 engine. Six-speed Steptronic automatic or available manual transmission\*
- Advanced dynamic safety and performance systems include four-wheel anti-lock disc brakes, enhanced Dynamic Stability Control, Dynamic Traction Control, brake-fade compensation, brake standby and brake drying.\* Available active steering\*

### European luxury appointments

- In addition to standard leather seating surfaces and wood trim, available luxury features include LOGIC7 surround-sound audio, Cold Weather Package, 19-inch performance wheels/tires, head-up display, iPod/USB adapter and navigation\*



### 6 Series safety engineering

- Comprehensive safety systems range from front, side-impact and side-curtain airbags (SRS),\*\* to pre-tensioning front safety belts, to Coded Drive-Away Protection, to run-flat tires with Tire Pressure Monitor

### Coupe or Convertible

- Your choice: The closed comfort of a Coupe or the wide-open freedom of a Convertible

\* The availability of specific models, drivetrains, features and options may vary by region, and the precise combination of features you are looking for may not be available in a Certified Pre-Owned BMW.

\*\* Please remember that the safety belts in a BMW constitute the primary protection system for driver and passengers in collisions. The airbag Supplemental Restraint System (SRS) is a supplement to the safety belts. Although airbags provide additional protection, airbags alone are not sufficient. Always wear your safety belts. Children younger than 12 years old should always be properly restrained in a back seat, away from airbags. Never place an infant seat in the front seat.

# 7

## BMW 7 SERIES – THE LUXURY SEDAN OF ALL LUXURY SEDANS

The pinnacle of luxury combined with the performance of a BMW sports sedan, the 7 Series sits atop the pantheon of premium luxury cars. Its elegantly appointed and spacious interior – the rear seat of the long-wheelbase model is truly limousine-like – belies the fact that the 7 Series is equally rewarding to the driver, whether cruising the interstate or touring back country roads.

### Effortless performance

- A responsive and efficient DOHC 32-valve V8 or V12 engine is mated to a six-speed Steptronic automatic transmission
- Advanced dynamic safety and performance systems include four-wheel anti-lock disc brakes, Dynamic Stability Control, Dynamic Traction Control, brake-fade compensation and brake drying\*

### Ultimate levels of luxury

- In addition to the expected standard luxuries, available features include LOGIC7 surround-sound audio, heated steering wheel, rear sunshade, Xenon Adaptive Headlights, HD radio, Night Vision and the Comfort Access Package\*

### 7 Series safety engineering

- Comprehensive safety systems range from front, side-impact and side-curtain airbags (SRS),\*\* to pre-tensioning front safety belts, Coded Drive-Away Protection, and run-flat tires with Tire Pressure Monitor

### Premium accommodations

- Available exclusively as a standard or long-wheelbase luxury Sedan

\* The availability of specific models, drivetrains, features and options may vary by region, and the precise combination of features you are looking for may not be available in a Certified Pre-Owned BMW.

\*\* Please remember that the safety belts in a BMW constitute the primary protection system for driver and passengers in collisions. The airbag Supplemental Restraint System (SRS) is a supplement to the safety belts. Although airbags provide additional protection, airbags alone are not sufficient. Always wear your safety belts. Children younger than 12 years old should always be properly restrained in a back seat, away from airbags. Never place an infant seat in the front seat.







# X3

## BMW X3 – DEFINING THE CATEGORY OF LUXURY/COMPACT SAV®

**Nimble performance and any-road traction deliver a unique driving experience for X3 owners. Its supremely functional and roomy passenger cabin provides a place for many of your lifestyle activities and hobbies. On top of all that, the X3 has received top ratings in both government and industry crash tests.**

### Dynamic performance ahead of its class

- Responsive and efficient DOHC 24-valve inline six-cylinder engine. Steptronic automatic or available manual transmission\*
- Advanced dynamic safety and performance systems, including four-wheel anti-lock disc brakes, enhanced Dynamic Stability Control, Dynamic Traction Control, brake-fade compensation, brake standby and brake drying, plus Hill Descent Control\*

### Amenities for the senses

- Available comfort and convenience features include leather seating surfaces and wood trim, premium audio system, Park Distance Control, panoramic moonroof, Cold Weather Package, rain-sensing windshield wipers, iPod/USB adapter and navigation\*

### X3 safety engineering

- Comprehensive safety systems range from front, side-impact and side-curtain airbags (SRS),\*\* to pre-tensioning front safety belts, to Coded Drive-Away Protection

### Surefooted traction and control

- Standard xDrive intelligent all-wheel drive provides enhanced grip on slick road surfaces, combined with a rear-wheel bias for responsive sports-sedan handling on all road surfaces

\* The availability of specific models, drivetrains, features and options may vary by region, and the precise combination of features you are looking for may not be available in a Certified Pre-Owned BMW.

\*\* Please remember that the safety belts in a BMW constitute the primary protection system for driver and passengers in collisions. The airbag Supplemental Restraint System (SRS) is a supplement to the safety belts. Although airbags provide additional protection, airbags alone are not sufficient. Always wear your safety belts. Children younger than 12 years old should always be properly restrained in a back seat, away from airbags. Never place an infant seat in the front seat.



# BMW X5 – THE INIMITABLE SPORTS ACTIVITY VEHICLE® FROM BMW

With the sporty performance of a BMW sedan combined with the capabilities to take you wherever you want to go, the X5 delivers confidence and control on virtually any road surface. Select models offer room for up to seven occupants. Highly versatile, roomy and accommodating, the X5 is an all-around performer, weather or not.

## Dynamic performance ahead of its class

- Responsive and efficient DOHC 24-valve inline six-cylinder engine or DOHC 32-valve V8 engine. Six-speed Steptronic automatic or available manual transmission\*
- Advanced dynamic safety and performance systems, including four-wheel anti-lock disc brakes, enhanced Dynamic Stability Control, Dynamic Traction Control, brake-fade compensation, brake standby and brake drying, plus Hill Descent Control\*

## Luxury and technology features

- Available comfort and convenience features include leather seating surfaces and wood trim, premium audio system, Park Distance Control, panoramic moonroof, Cold Weather Package, rain-sensing windshield wipers, head-up display, four-zone climate control and navigation\*

## X5 safety engineering

- Comprehensive safety systems range from front, side-impact and side-curtain airbags (SRS),\*\* to pre-tensioning front safety belts, Coded Drive-Away Protection, and run-flat tires with Tire Pressure Monitor

## Confidence and control

- Standard xDrive intelligent all-wheel drive provides enhanced grip on slick road surfaces, combined with a rear-wheel bias for responsive sports-sedan handling on all road surfaces

\* The availability of specific models, drivetrains, features and options may vary by region, and the precise combination of features you are looking for may not be available in a Certified Pre-Owned BMW.

\*\* Please remember that the safety belts in a BMW constitute the primary protection system for driver and passengers in collisions. The airbag Supplemental Restraint System (SRS) is a supplement to the safety belts. Although airbags provide additional protection, airbags alone are not sufficient. Always wear your safety belts. Children younger than 12 years old should always be properly restrained in a back seat, away from airbags. Never place an infant seat in the front seat.





# X6

## BMW X6 SPORTS ACTIVITY COUPE™ – A NEW CLASS OF BMW

**Impressively powerful and dramatically styled, the X6 is one of the newest entries in the BMW stable. With its dramatic and trendsetting design, luxuriously equipped passenger cabin and strong dynamic performance, the X6 is an exclusive vehicle for a very special individual.**

### Turbocharged performance

- Highly responsive and efficient twin-turbocharged inline six-cylinder engine or muscular twin-turbocharged V8. Six-speed Sport Automatic transmission
- Advanced dynamic safety and performance systems, including four-wheel anti-lock disc brakes, enhanced Dynamic Stability Control, Dynamic Traction Control, brake-fade compensation, brake standby and brake drying, and Hill Descent Control.\* Available active steering\*

### Exclusive appointments

- Luxuriously equipped with Nevada Leather seat trim, plus standard convenience features such as automatic tailgate, premium audio with HD radio and Sirius Satellite Radio, Park Distance Control, and Nevada leather seating surfaces with wood trim. Available options\* include a navigation system and a DVD entertainment system located in the glove compartment that offers both front and rear screens

### X6 safety engineering

- Comprehensive safety systems range from front, side-impact and side-curtain airbags (SRS),\*\* to pre-tensioning front safety belts, Coded Drive-Away Protection, and run-flat tires with Tire Pressure Monitor, Adaptive Brake Lights, Xenon Adaptive Headlights

### Dynamic traction and control

- Standard xDrive intelligent all-wheel drive provides enhanced grip on slick road surfaces, combined with a rear-wheel bias and Dynamic Performance Control for responsive sports-sedan handling on all road surfaces

\* The availability of specific models, drivetrains, features and options may vary by region, and the precise combination of features you are looking for may not be available in a Certified Pre-Owned BMW.

\*\* Please remember that the safety belts in a BMW constitute the primary protection system for driver and passengers in collisions. The airbag Supplemental Restraint System (SRS) is a supplement to the safety belts. Although airbags provide additional protection, airbags alone are not sufficient. Always wear your safety belts. Children younger than 12 years old should always be properly restrained in a back seat, away from airbags. Never place an infant seat in the front seat.





## M MODELS – THE ULTIMATE IN BMW PERFORMANCE

**For the avid enthusiast who insists on the highest level of performance, BMW M models are also available as Certified Pre-Owned vehicles.**

Depending upon model year,\* M models include:

- BMW M3 Coupe, Convertible or Sedan
- BMW M6 Coupe or Convertible
- BMW M5 Sedan
- BMW Z4 M Coupe or Roadster
- BMW X5 M
- BMW X6 M

Highly tuned inline six-cylinder, V8 or even V10 engines power these thoroughbreds, with powertrains optimized to deliver performance beyond that of ordinary vehicles. While manual transmissions dominate, many M models are equipped with Formula 1 inspired SMG automatic/manual gearboxes.

With technically advanced engines, razor-sharp handling from light-but-strong suspension components, large vented disc brakes and highly communicative chassis, M models obviously accentuate over-the-road dynamics. But interior accoutrements are also custom, with highly bolstered sports seats, available premium leathers or even carbon fiber trim, and high-output audio systems to delight the senses.

BMW M models are the ultimate of the ultimate, epitomizing pure driving joy on adrenaline.

\* The availability of specific models, drivetrains, features and options may vary by region, and the precise combination of features you are looking for may not be available in a Certified Pre-Owned BMW. Certain M models were not available in all model years.





**BMW EfficientDynamics**  
Less emissions. More driving pleasure.



## EFFICIENTDYNAMICS – LOWER EMISSIONS, GREATER DRIVING PLEASURE

An ongoing series of programs designed to deliver incremental results each year, EfficientDynamics encompasses advances in engine efficiency, environmentally sensitive manufacturing, and future propulsion systems. These programs are designed to:

- Optimize engine efficiency for lower fuel consumption and greenhouse-gas emissions while retaining the expected levels of BMW performance
- Develop alternative powertrains, including the currently available Advanced Diesel engine, and ranging all the way up to the ActiveHybrid
- Low-waste, low-environmental-impact manufacturing processes that use less energy, water and raw materials

The results are real and measurable. According to the Environmental Defense Report, from the years 1990-2005, BMW reduced its fleet emissions 12.3 percent, even while increasing U.S. sales four-fold.\* In addition, BMW has been the automotive industry leader in sustainability for five years running on the Dow Jones Sustainability Indexes (DJSI) – the only automotive company to be listed every year since the DJSI was established in 1999. At BMW, environmental leadership is just one more facet of being first.

\* 2007 Environmental Defense Report.

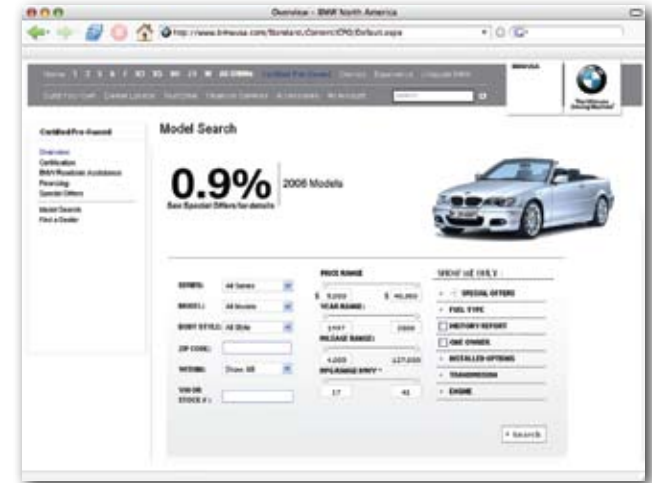




## FINANCE OR LEASE THE BMW WAY

BMW Financial Services is an integral part of the CPO BMW experience. That means you can finance or even lease your pre-owned BMW at an attractive rate, just as you can with a new BMW. Check for special offers at [bmwusa.com/cpo/specialoffers](http://bmwusa.com/cpo/specialoffers) or ask your BMW Client Advisor. You can even set up automatic payments, and track your account information online by using BMW My Account.

Your BMW center and BMW Financial Services will tailor financing or leasing to meet your specific needs – an experience that will be as smooth and enjoyable as the vehicle you've selected. To find out more about BMW Financial Services, visit [bmwusa.com/fs](http://bmwusa.com/fs).



### Start your search at home

To see what models your local BMW center has in stock, or to check the availability of specific vehicles in your area, go to [bmwusa.com/cpo](http://bmwusa.com/cpo). Click on Model Search to find exactly what you've been looking for. Sedan or Coupe, manual or automatic, there are so many choices. The Vehicle Locator allows you to enter a model, body style, transmission choice and price range, and it will search a radius of up to 500 miles. When you've found the car you want, you can even get an estimate of monthly purchase or lease payments. Log on today.



## All Certified Pre-Owned BMW vehicles:

- Are recent models with less than 60,000 miles
- Have been thoroughly inspected by a BMW trained Technician
- Have an accompanying CARFAX® Vehicle History Report™
- Are covered by the Certified Pre-Owned BMW Protection Plan for up to 6 years or 100,000 miles\*
- Come with \$0 Maintenance for the first 4 years or 50,000 miles (whichever comes first)
- Are backed by the nationwide network of BMW centers
- Are covered by BMW Roadside Assistance



## A comprehensive protection plan

Every Certified Pre-Owned BMW comes with a Protection Plan that is designed to give you complete confidence in the vehicle.

First, only the best pre-owned BMW vehicles – recent models with less than 60,000 miles – are selected for certification. Each vehicle must undergo a thorough inspection by a BMW trained Technician. All scheduled maintenance is brought up to date. If something is not correct, it is fixed. After the vehicle checklist is completed, even the vehicle's history is inspected – a CARFAX® Vehicle History Report™ is run so that you know the vehicle's maintenance history at the time of certification.



And, for ultimate peace of mind, BMW provides warranty coverage for every Certified Pre-Owned vehicle for a total of 6 years/100,000 miles (whichever comes first) from the vehicle's original in-service date.\* Added to that is a full 6 years with unlimited miles of BMW Roadside Assistance (from the vehicle's original in-service date).\*\*

\* The Certified Pre-Owned BMW Limited Warranty provides coverage for up to 2 years or 50,000 miles (whichever comes first) from the date of the expiration of the 4 year/50,000 mile (whichever comes first) BMW New Vehicle Limited Warranty. The Certified Pre-Owned Warranty Protection Plan is valid only in the United States and Puerto Rico. It is not valid in Canada. See your BMW center for complete details of warranty coverage.

\*\* Starting with the expiration of the 4-year New Vehicle BMW Roadside Assistance plan. Subject to certain limitations and exclusions.

† Anywhere in the United States, Canada or Puerto Rico, 24 hours a day, seven days a week, all it takes to get help is a single toll-free call. Whether the vehicle is disabled due to a flat tire or a dead battery, or even runs out of gas, BMW Roadside Assistance will be there to help. The coverage also includes lock-out service as well as towing to the nearest BMW center, if required.

## The CPO BMW warranty

The 2 year/50,000 mile (whichever comes first) Certified Pre-Owned BMW Limited Warranty takes over when the original 4 year/50,000 mile New Vehicle Limited Warranty expires.\* Although the Certified Pre-Owned BMW Limited Warranty is extremely comprehensive, covering a wide range of vehicle components, it is not an extension of the original BMW New Vehicle Limited Warranty.

Like the New Vehicle Warranty, however, the Certified Pre-Owned BMW Limited Warranty is administered by BMW of North America, LLC, which means that covered repairs are performed by BMW trained Technicians using only original BMW parts.

## BMW Roadside Assistance

Every Certified Pre-Owned BMW comes with BMW Roadside Assistance coverage for 2 years with unlimited miles.†

## BMW Assist

BMW Assist, which is available on many late-model BMW vehicles, combines GPS location technology with hands-free wireless communications. With a push of a button, you can get emergency help, or even directions, traffic and weather information.

## BMW Maintenance Program

Every Certified Pre-Owned BMW comes with the remainder of the BMW Maintenance Program. For the first 4 years or 50,000 miles (whichever comes first) from the original in-service date, you pay nothing for all scheduled inspections, oil changes, brake pads, wiper blade inserts and other wear-and-tear items.

## The Certified Pre-Owned BMW Limited Warranty: What is covered

**In general:** The Certified Pre-Owned BMW Limited Warranty is designed to protect owners from defects in materials or workmanship on covered parts and components. This broad coverage includes the following parts and systems:

- Engine
- Automatic/manual transmission
- Final-drive assembly, propeller shaft(s)
- Steering
- Hydraulic brake parts
- Anti-lock Braking System (ABS)
- Electrical
- Air conditioning/heating system
- Cooling system
- Fuel system



## What is not covered

**Upkeep items:** Maintenance; engine, transmission and body adjustments; wheel alignment, balancing or rotation; wiper blade inserts; engine drive belts; spark plugs; filters; fuses; all batteries; all hoses and clamps (except air conditioning and power steering); oils, lubricants, fluids, refrigerants and coolants (except as required in the course of a covered repair); brake pads and rotors; brake shoes and drums; manual transmission clutch assemblies; suspension dampers (shock absorbers/strut elements); exhaust systems; tires.

**Wear and use:** All wear-and-use items as defined in “The Certified Pre-Owned BMW Vehicle Program Consumer Information Statement” for Certified Pre-Owned BMWs (including all suspension parts and components).

**Body and interior:** Paint; glass; headlights; bulbs (except instrumentation); mirrors; lenses; body and chassis; body seals and gaskets; interior and exterior trim, moldings and fasteners; upholstery, headliner, carpeting, floor and trunk mats; convertible top (all components except electronics); air or water leaks; wind or body noises; wheels; damage due to rust, corrosion or contamination except as covered by the BMW New Vehicle Rust and Corrosion Perforation Warranty.

**Accessories:** Radio/CD (or cassette) player, telephone, navigation system, CD changer, DVD player or any components of those systems, plus non-original equipment parts, components or accessories.

## Other Terms and Conditions

**Handling charge:** There is a \$50.00 handling charge (per repair visit) that must be paid by the customer for any repairs covered under the terms of the Certified Pre-Owned BMW Limited Warranty.

### Transfers

The Certified Pre-Owned BMW Protection Plan is fully transferable from the original Certified Pre-Owned BMW purchaser or lessee to subsequent owner(s) or lessee(s).

### Repair services

While customers may elect to use a non-approved repair facility for maintenance or repairs, BMW is not obligated to pay for any such repair (even if covered under the Certified Pre-Owned BMW Limited Warranty). To obtain service under the Certified Pre-Owned BMW Limited Warranty, the vehicle must be delivered to an authorized BMW center. Moreover, the Certified Pre-Owned BMW Limited Warranty does not cover additional expenses related to a breakdown, such as, but not limited to, car rental, lodging expenses, loss of pay or telephone charges, except as covered by BMW Roadside Assistance.

Certified Pre-Owned  
BMW Vehicles



The Ultimate  
Driving Machine®

bmwusa.com/cpo

Visit our website at [bmwusa.com/cpo](http://bmwusa.com/cpo)  
or call us at 1-800-334-4BMW (4269).



© 2010 BMW of North America, LLC. Not to be reproduced wholly or in part without written permission of BMW of North America, LLC. The BMW name, logo, model names and SAV are registered trademarks. Other trademarks and registered trademarks are the property of their respective owners.

10CPOFLBRO1



**Mixed Sources**  
Product group from well-managed  
forests, controlled sources and  
recycled wood or fiber  
Cert no. SK-COC-1234  
www.fsc.org  
© 1996 Forest Stewardship Council

This BMW brochure is printed on recycled paper that contains a minimum of 10% post-consumer (PCW) fiber. This recycled paper is made from fiber sourced from well-managed forests and other controlled wood sources and is independently certified by SmartWood, a program of the Rainforest Alliance, to the Forest Stewardship Council (FSC) standards.

FSC is an independent nonprofit organization devoted to encouraging the responsible management of the world's forests. FSC sets high standards to ensure that forestry is practiced in an environmentally responsible, socially beneficial, and economically viable way.